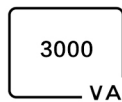


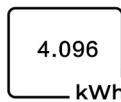
RAJA



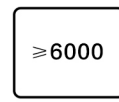
LiFePO4 Cells



Inverter 3kW



Battery Capacity



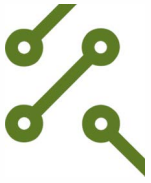
Battery Cycles



Warranty

RAJA FA3000A

3kW All-in-one Energy Storage System



Inverter Ingegredated

Pure Sine Wave Intervert
6kW Peak Power
120V-450V PV Input
Max Charging 100A



Plug and Use

Functional Ports Reserved
PV connection
AC Output
AC loads Connection



Smart BMS

Multi-level Safety
Overcharge Protection
Over-discharge Protection
Over-current/heat protection



Easy Setup

Indoor/Outdoor
Household AC
All-in-one System
Compact Design



FA3000A 3000W All-in-one Energy Storage System



Inverter Characteristics

Battery Characteristics

Inverter Type	Offgrid	Nominal Voltage	25.6V
AC Rated Power/Peak Power	3kW/6kW		
Vac Input/Output Voltage	230V ± 5%	Rated Capacity	160Ah(0.5C/25°C)
PV Voltage Range	120V-450V		
PV Maximum Input Current	18A	Rated Energy	4.096kWh (0.5C/25°C)
Maximum Charging Current	100A		
Operation Interaction	Display Screen, App		
Product Dimension	520 × 210 × 750mm		
Weight	60kg		
Working Temperature	Charge: 0-45°C		
	Discharge: -20-60°C		
Storage Temperature	10-35°C		